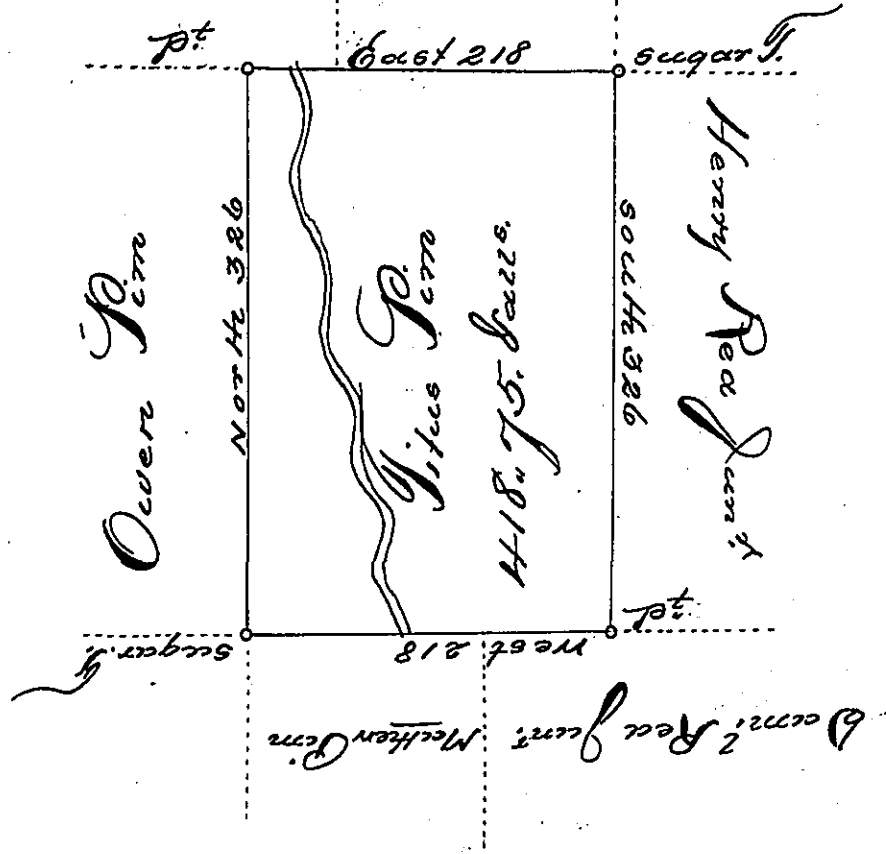


Solomon Pim Chas Rea



Situate in District No 6 North and West of the Allegheny and Ohio Rivers and Connewango Creek in Allegheny County, Containing four hundred and eighteen Acres, Seventy five perches & allowance of six per Ct. Surveyed the 13<sup>th</sup> of October 1799. By order of Resurvey of the 16<sup>th</sup> of May 1799, and on a Warrant granted to Titus Pim dated the tenth of April, 1793.

To Daniel Brodhead Esquire  
Surveyor General

Alexander M. Dowell, D. J.

IN TESTIMONY that the above is a copy of the original remaining on file in the Department of Internal Affairs of Pennsylvania, made conformably to an Act of Assembly approved the 16th day of February, 1833, I have hereunto set my Hand and caused the Seal of said Department to be affixed at Harrisburg, this fourth day of April, 1899.

Jameal W. Pitta  
Secretary of Internal Affairs.